

**Nokia Customer Care  
6265/6265i/6268 (RM-66)  
Mobile Terminals**

# **Reassembly**

<b>Contents</b>	<b>Page</b>
Safety Information .....	3
ESD Protection .....	3
Reassembly Instructions.....	4
1. Insert the DC Jack .....	4
2. Insert the Camera Flash .....	4
3. Insert the BT Antenna .....	4
4. Insert the IHF Assembly .....	5
5. Insert the Camera Key and the Volume Key .....	5
6. Insert the LCD Flex Cable and Assembly .....	6
7. Insert the Main Flex Assembly .....	7
8. Add the Screws .....	8
9. Camera Installation .....	8
10. Attach the PWB and B/C Slide Assembly .....	9
11. Add the Screws .....	10
12. Connect the A-cover and the B-cover .....	10
13. Add the Camera Gasket .....	11
14. Attach the Antenna/E-cover .....	12
15. Attach the Main Keypad .....	12
16. Insert the Battery and Attach the Battery Cover .....	13

## Safety Information

Adhere to the following guidelines when assembling and disassembling the phone.

- **QUALIFIED SERVICE**  
Only qualified personnel may install or repair phone equipment.
- **ACCESSORIES AND BATTERIES**  
Use only approved accessories and batteries. Do not connect incompatible products.
- **CONNECTING TO OTHER DEVICES**  
When connecting to any other device, read its user's guide for detailed safety instructions. Do not connect incompatible products.

## ESD Protection

Nokia requires that phone repair centers have sufficient ESD protection against static electricity when servicing cellular phones. Use the following guidelines:



- A cellular phone that is ready for use can be handled normally without ESD protection. The battery can be replaced in normal conditions of use.
- Use ESD protection when replacing a color cover, except for the phone covers which can be replaced by the customer.
- All electronic parts of the phone, including the display, are susceptible to ESD. Resistors also can be damaged by static electricity discharge.
- All ESD-sensitive parts must be packed in metallized protective bags during shipping and handling outside any ESD Protected Area (EPA).
- Every repair action involving opening the phone or handling the phone components must be done under ESD protection.
- ESD-protected spare part packages **MUST NOT** be opened/closed outside an EPA.

For more detailed information about ESD protection and EPAs, contact your local Nokia Customer Care representative.

## Reassembly Instructions

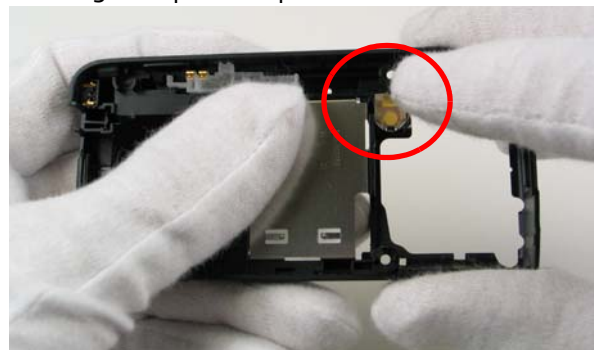
### 1. Insert the DC Jack

Using a CA-44 adapter, gently press the DC-Jack into the D-cover assembly. Make sure the adapter is not plugged into an electric source.



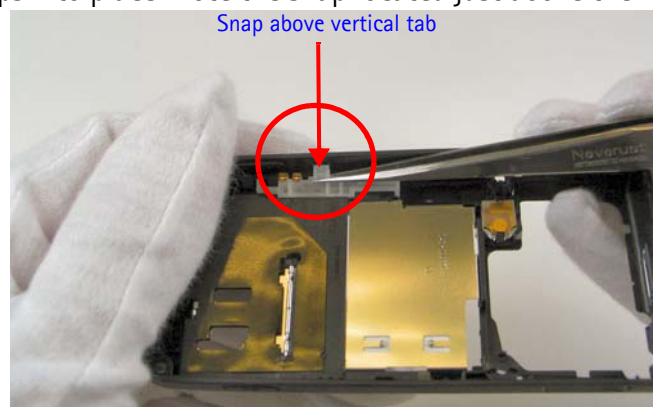
### 2. Insert the Camera Flash

Gently place the camera flash into its retainers and snap it into place using your fingers. Make sure not to damage snap in the process.



### 3. Insert the BT Antenna

Using tweezers, gently place the BT antenna into the D-cover making certain the assembly snaps into place. Note the snap located just above the vertical tab.



*Caution: Do not damage the metal antenna springs.*

#### 4. Insert the IHF Assembly

Grasp the IHF assembly with the inside facing you. Insert it, pushing toward the bottom of the D-cover. Rotate and snap it into position within the D-cover assembly. Make certain not to damage the IHF speaker gasket during assembly.



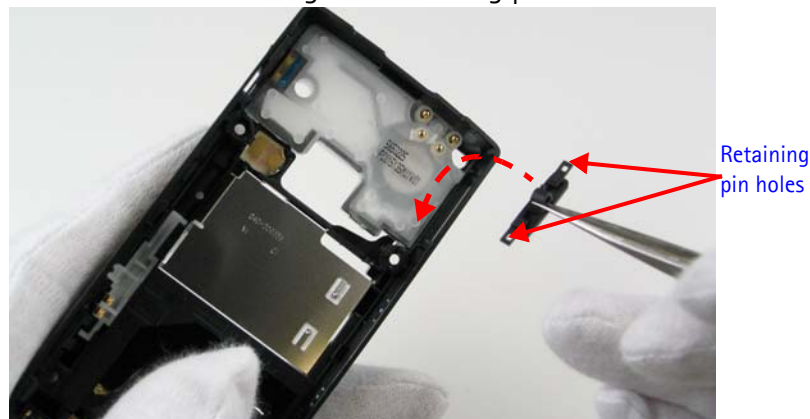
#### 5. Insert the Camera Key and the Volume Key

- a. Using tweezers, position the camera key into its mount and press it into place.



*Note: To correctly place volume key, orient the central tab closest to the UIM lid.*

- b. Using tweezers, gently place the volume key on its retaining pins and press into place, with the retention tabs closest to the GPS antenna module. Be careful not to damage the retaining pins.



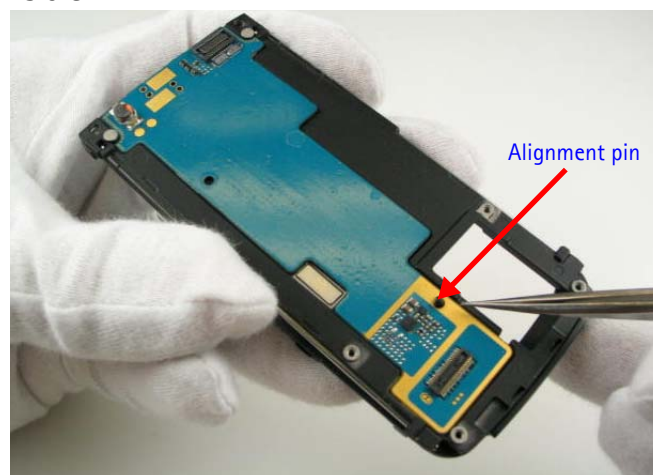
*Note: Notice the semi-circular indentation on the top of the key.*

## 6. Insert the LCD Flex Cable and Assembly

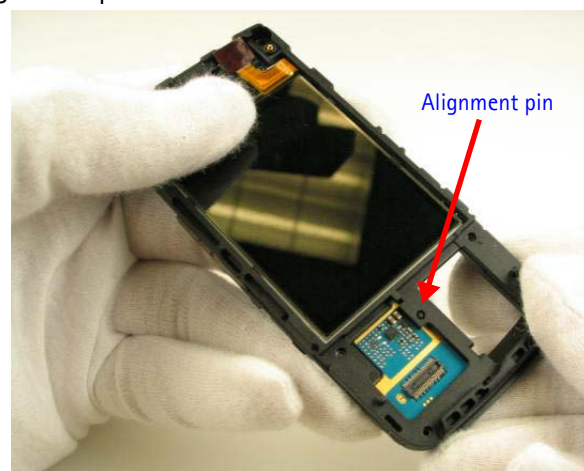
- a. Fit the LCD display into the LCD frame, carefully aligning the mounting tabs. Gently press into place from the back to secure.



- b. Place the UI PWB into the B/C slide assembly making sure the alignment pin is visible.



- c. Hook the LCD frame over the B/C slide assembly. Snap it into place on the bottom, making sure the alignment pin is visible.



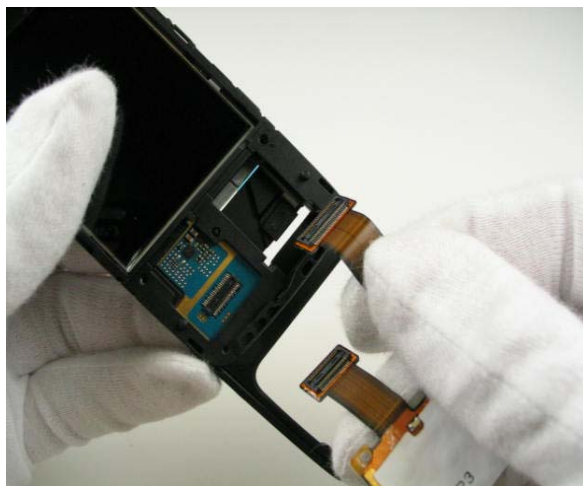


- d. Connect the LCD to the UI PWB by pressing together.



### 7. Insert the Main Flex Assembly

- a. With the slide assembly open, align both UI flex slots. Insert the flex through the two slots. Place the keymat on the frame. Align and connect the flex cable.



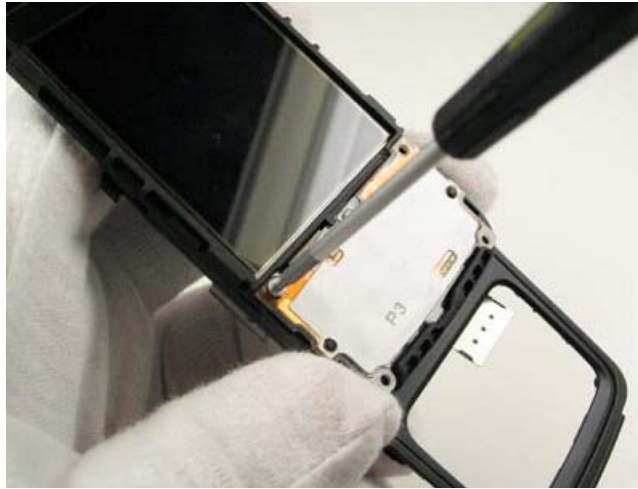
- b. Tuck the keymat assembly under the mounting tab located just under the LCD display and rotate it downward into position. Snap it into place.



Mounting tabs

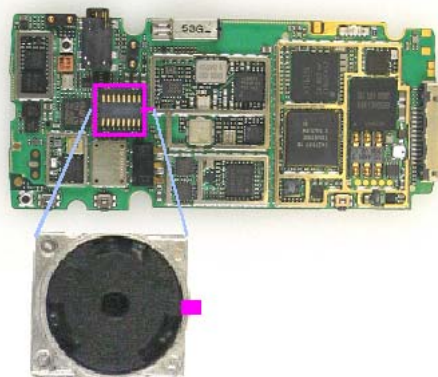
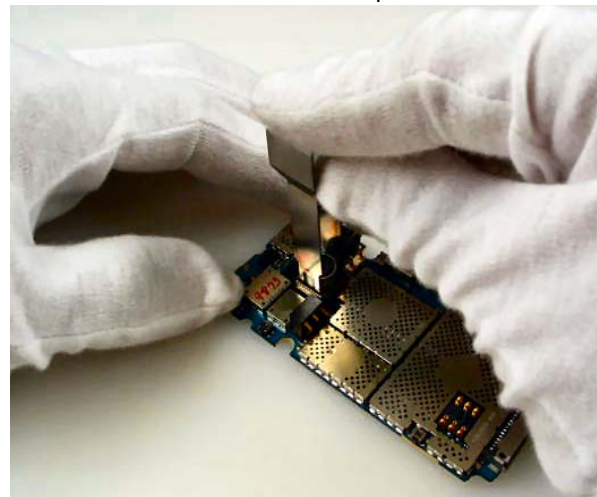
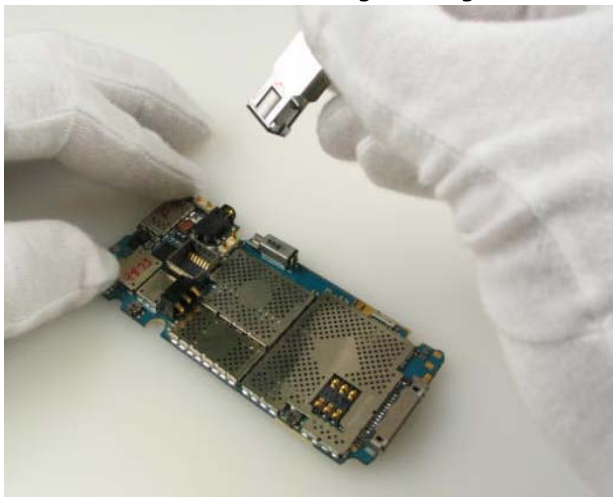
## 8. Add the Screws

With the main flex assembly secured, fasten the four IP-4 Torx 4 Plus screws. Use torque driver set to 11Ncm.



## 9. Camera Installation

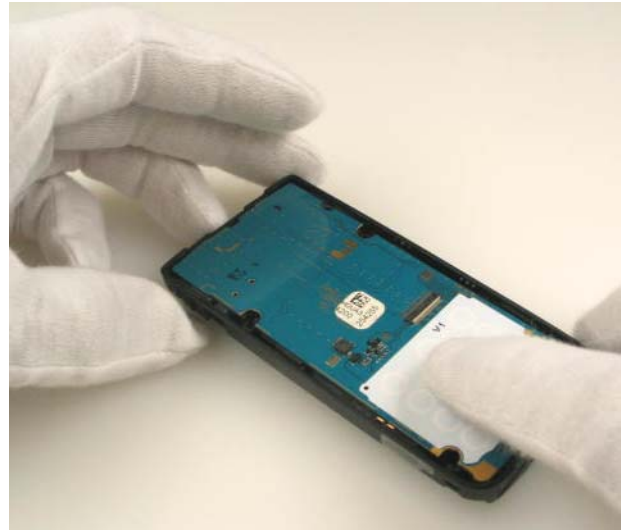
Using the SS-45 camera removal tool, place the camera module into position in the camera mount using the alignment tab. Secure the camera module into place.





## 10. Attach the PWB and B/C Slide Assembly

- a. Place the PWB into the D-cover using the alignment pins.



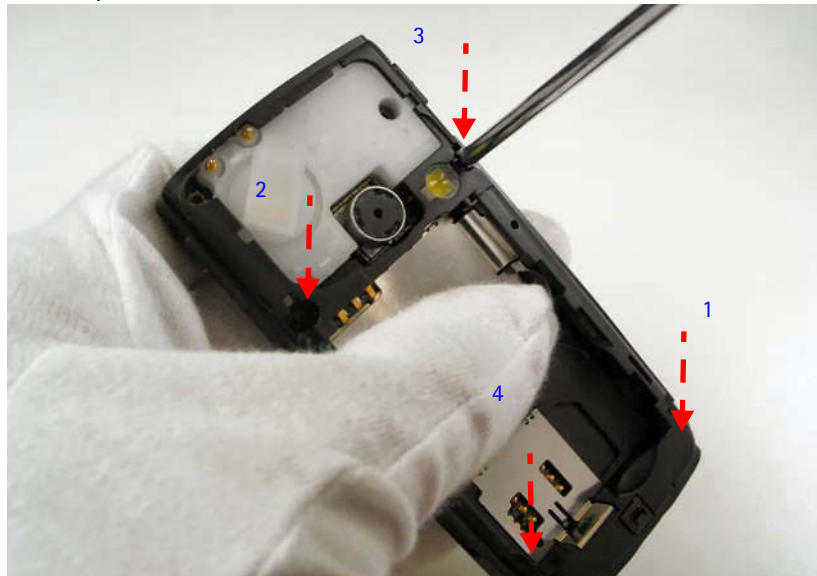
- b. With the mobile terminal slide assembly open, align and connect the main flex cable through the keymat hole.



- c. Close the mobile terminal slide, align the assemblies and snap together.

## 11. Add the Screws

With the slide assembly open, fasten the four IP-4 Torx 4 Plus screws in the order shown below. Use torque driver set to 15 Ncm.



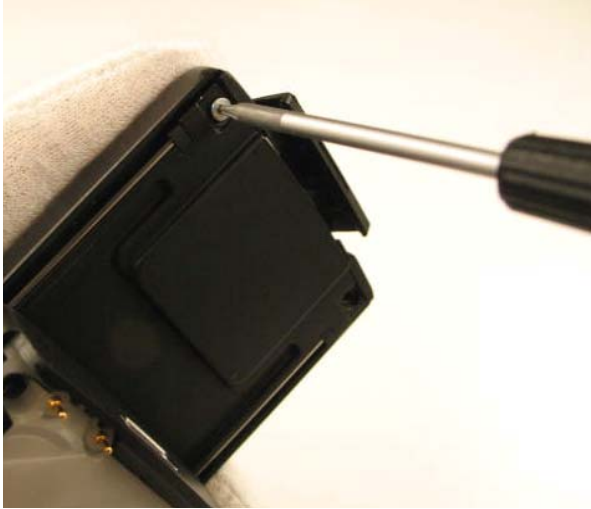
## 12. Connect the A-cover and the B-cover

- a. With the mobile terminal slide assembly open, rotate the A-cover into position on the slide assembly and snap it into place.



- b. Fasten the two IP-4 Torx 4 Plus screws using torque driver set to 11 Ncm.

- c. Complete the step by affixing the screw caps.



*Caution: Make sure the mini-SD door is open before placement. Do not close SD door until A-cover is screwed down.*

### **13. Add the Camera Gasket**

Gently place the camera gasket onto the camera lens barrel and press it into place.



#### 14. Attach the Antenna/E-cover

Carefully align the E-cover to the D-cover assembly. Press the E-cover into place by gently squeezing all sides to ensure a tight fit.



#### 15. Attach the Main Keymat

- a. Gently insert the left side of the keymat into the C-cover assembly, tucking it between the cover and the keydome sheet.
- b. Bend the keymat to tuck it in the other side.
- c. Press down on both the upper and lower edges to secure the keymat in place.



## 16. Insert the Battery and Attach the Battery Cover

- a. Insert the battery.
- a. Slide the battery cover into position and press to snap it into place.





This page intentionally left blank.